

Sample Ballot - Democratic Party Primary
 Harnett County, North Carolina
 March 5, 2024

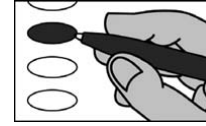
D0003



PCT: PR08_BLACK RIVER 01, PR08_BLACK RIVER 03

BALLOT MARKING INSTRUCTIONS

- A. With the marking device provided or a black ball point pen, completely fill in the oval to the left of each candidate or selection of your choice as shown.
 B. If you tear, deface or wrongly mark this ballot, return it to request a replacement.



SAMPLE BALLOT
SAMPLE BALLOT
SAMPLE BALLOT
SAMPLE BALLOT
SAMPLE BALLOT
SAMPLE BALLOT
SAMPLE BALLOT
SAMPLE BALLOT
SAMPLE BALLOT
SAMPLE BALLOT
SAMPLE BALLOT
SAMPLE BALLOT

SAMPLE BALLOT
SAMPLE BALLOT
SAMPLE BALLOT
SAMPLE BALLOT
SAMPLE BALLOT
SAMPLE BALLOT
SAMPLE BALLOT
SAMPLE BALLOT
SAMPLE BALLOT
SAMPLE BALLOT
SAMPLE BALLOT
SAMPLE BALLOT

PARTISAN NOMINATIONS	NC Treasurer (You may vote for ONE)
Presidential Preference (You may vote for ONE)	<input type="radio"/> Gabe Esparza
<input type="radio"/> Joseph R. Biden, Jr.	<input type="radio"/> Wesley Harris
<input type="radio"/> No Preference	NC Supreme Court Associate Justice Seat 6 (You may vote for ONE)
NC Governor (You may vote for ONE)	<input type="radio"/> Allison Riggs
<input type="radio"/> Gary Foxx	<input type="radio"/> Lora Christine Cabbage
<input type="radio"/> Michael R. (Mike) Morgan	End of Ballot
<input type="radio"/> Josh Stein	
<input type="radio"/> Marcus W. Williams	
<input type="radio"/> Chrelle Booker	
NC Lieutenant Governor (You may vote for ONE)	
<input type="radio"/> Rachel Hunt	
<input type="radio"/> Mark H. Robinson	
<input type="radio"/> Ben Clark	
NC Attorney General (You may vote for ONE)	
<input type="radio"/> Satana Deberry	
<input type="radio"/> Tim Dunn	
<input type="radio"/> Jeff Jackson	
NC Commissioner of Insurance (You may vote for ONE)	
<input type="radio"/> Natasha Marcus	
<input type="radio"/> David Wheeler	
NC Superintendent of Public Instruction (You may vote for ONE)	
<input type="radio"/> C.R. Katie Eddings	
<input type="radio"/> Maurice (Mo) Green	
<input type="radio"/> Kenon Crumble	